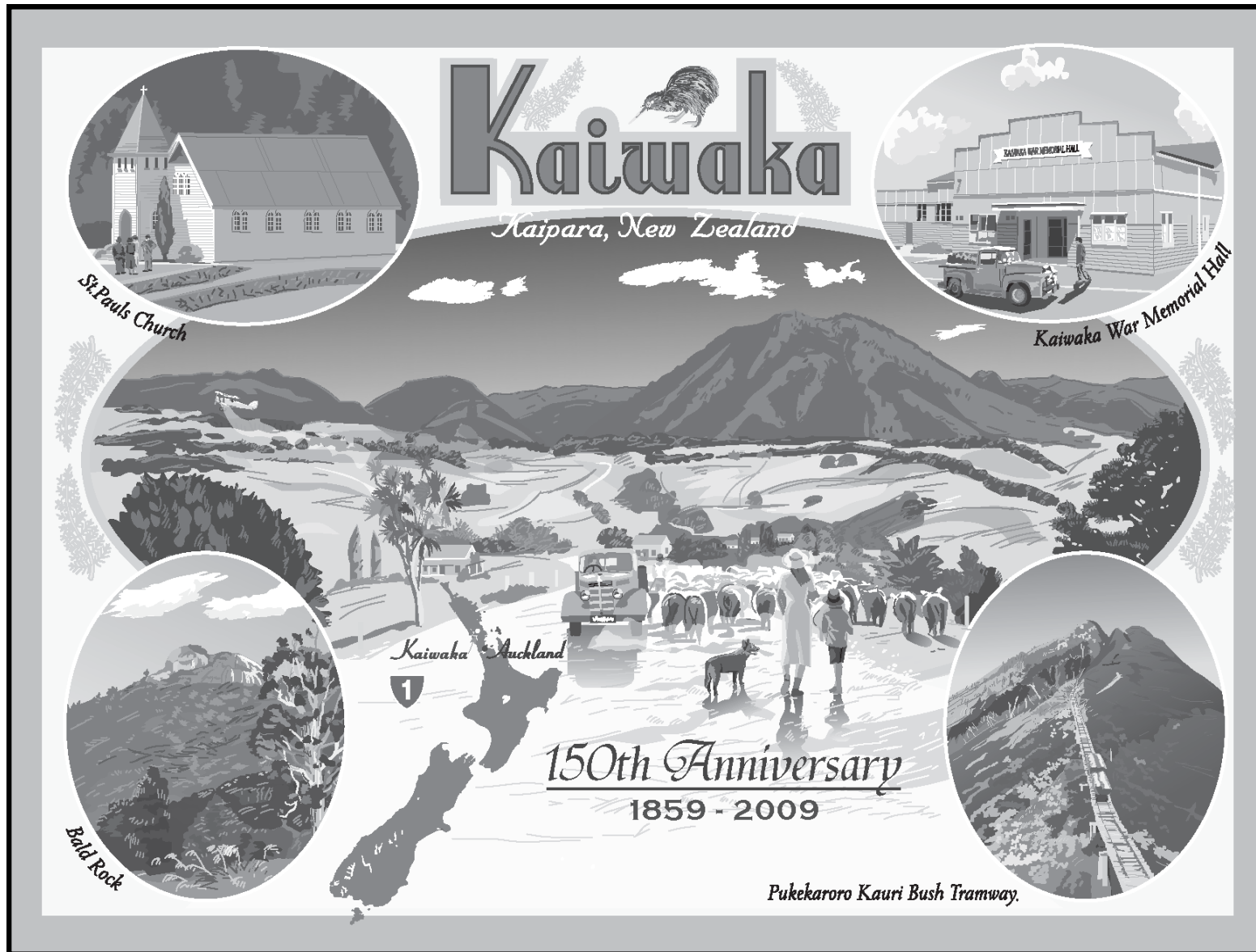


2018

159 years of Kaiwaka *'The Little Town of Lights'*



January 2018

Man's Best Friend

Sun	Mon	Tues	Wed	Thu	Fri	Sat
	1 New Year's Day	2	3	4	5	6
7	8	9	10	11	12	13
14	15	16	17	18	19	20
21	22	23	24	25	26 Otamatea Tennis Tournament	27
28	29 Anniversary Day	30	31			



Clockwise from left: Robert Hastie and Drum (Huntaway); Tony Hargreaves and Willie (Heading dog) penning sheep at Molesworth Sheep Dog Trials; Peter Finch's working dogs, Huntaways at the back, Heading dogs in front; Spec, representing the dogs that play a large part in our lives, from hunting to guarding to companionship; Tabby the cat - the dog's friend? Not likely! - manning the office fax at home.

The Huntaway and Heading dog are special to New Zealand and have been bred from Border Collies and Labradors.

● Kaiwaka's first recorded dog trial was held in 1899 at the Kaiwaka Show - in the paddock where the KWMHall now stands.

● The Molesworth Sheep Dog Trial Club will be celebrating its 60th anniversary on the Oneriri grounds on 1 and 2 May

● Handy Dog, a special yard event run on Hastie Farm, Otioro Rd.

● First cow - owned S.Chalton 1860s.

● First car and truck - 1915.

● First TV installed 2 April 1961.

● Tractors first arrived at the end of WWII. One of the first was a Farmall Tractor with an International Harvester haybaler.

● Rev.Gittos & family moved to Rangiora Mission Station in 1866.

● Village of Kaiwaka surveyed 1864.

● The Kaiwaka Riding in 1958 was 70 square miles (18,000 ha / 45,000 acres) with a capital value of £1.5 million, with a total population of nearly 1,100.

● 1 April 1859 sale of land in Kaiwaka was advertised in the

provincial gazette.

● The Kaiwaka centennial celebrations were 2-4 April 1959.

● The Kaiwaka Historical Society was formed 6 August 1986 - purpose to keep paper records and photographic history.

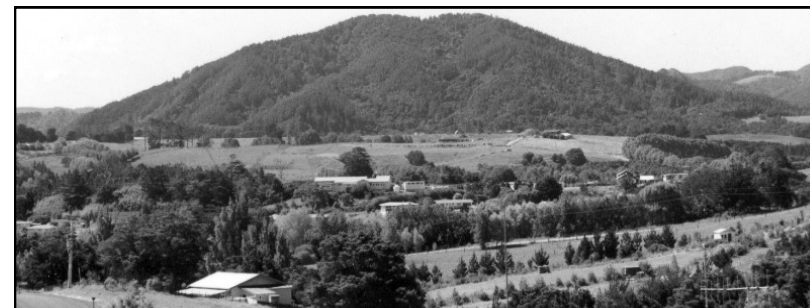
● Internet was being used by the general public in Kaiwaka by the mid-1990s.

● The Kaiwaka web site was established in 2003 - www.kaiwaka.co.nz

February 2018

Rocks, roads, rail & rivers

Sun	Mon	Tues	Wed	Thu	Fri	Sat
				1	2	3
4	5	6 Waitangi Day	7	8	9	10
11	12	13	14 Valentine's Day	15	16	17
18	19	20	21	22	23	24
25	26	27	28			



Pukekaroro – looking north across the school



Kaiwaka Railway Station opening 18 March 1913

● Rocks - Pukekaroro, Pukepohatu (Baldrock).

● Roads - Kaiwaka straddles State Highway 1, the road that traverses the entire length of New Zealand.

● Rail - From the south the rail line passes through the tunnel at Tunnel Hill, crossing Oneriri Road by the old station, over the Ranganui Bridge, and continues north.

● Rivers - The Kaiwaka River runs from the east, through the town, and joins with the Wairau River to form the Otamatea River. The Oruawharo and Topuni Rivers flow on the south side of Oneriri into the Kaipara Harbour.

● The Great North Road, from Auckland to Whangarei, passed through Kaiwaka but was only a line on a map for much of the 19th century.

● By 1900 the worst places on the road between Kaiwaka and Whangarei were metalled.

● 1890s - the bush tramway from Baldrock ran roughly south on line of SH1 nearly to Mountain Road and dropped to run out onto trestles over the Kaiwaka River.

● In 1896 fire destroyed the bush on Baldrock and put an end to kauri milling.

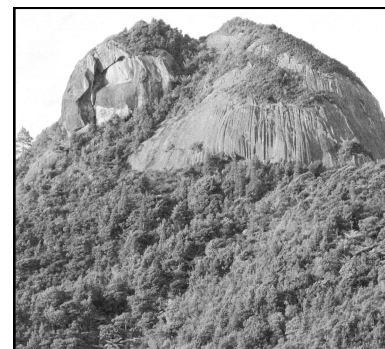
● Kaiwaka Landing, Curtis Point, was a regular stopping point for ships and boats until the Ranganui railway bridge was built in 1913-14 and blocked the access.

● In 1918 Jane Mander (1877-1949), wrote *The story of a New Zealand river*, a novel based on the Pukekaroro and Kaiwaka areas and families of the kauri milling time.

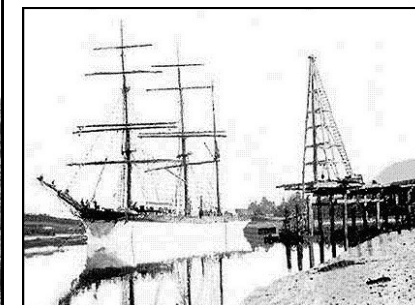
● February 1962 the Kaiwaka Mangawhai Rd, from SH 1 to the Town Boundary, was tarseled.

● The population of Kaiwaka in 1911 was 211. In the 2006 census the population of the town was just under 600.

Baldrock



Hazel Craig at Ranganui wharf



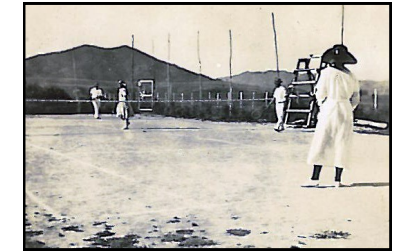
March 2018

Youthful adventure

Sun	Mon	Tues	Wed	Thu	Fri	Sat
				1	2	3
4	5	6	7	8	9	10
11	12	13	14	15	16	17 St. Patrick's Day
18	19	20	21	22	23	24
25	26	27	28	29	30 Good Friday	31



1912 hockey team



Tennis 1925



Fishing -1st marlin brought into Rangiora boat ramp 1996



Scouts team-building 1980s



Otamatea Gymnastics 2006



Kaiwaka Brownies 1980

● 'Boys Club' formed by Frank Jaques in 1925, with music and dancing.

● Fancy dress parties have been popular since the 1920s, and have been a regular feature for children since that time.

● Kaiwaka Plunket started 13 Aug 1936. In 1981 they joined with Mangawhai and Maungaturoto to form the Lower Northland branch.

● Hakaru Young Farmers began June 1949 and Country Girls in 1953. The two groups combined in 1974. In 1997 this club won the Dr L.W.McCaskill (NZ) Community Service Award.

● Scouts began October 1949.

● Cubs began February 1957.

● Guides and Brownies began March 1957.

● First ballet exam held 4 August 1960 - Miss K.Boyle teacher.

● Venturer Scouts began 1985.

● Rock Solid catered for youth throughout the 1990s.

● Scouts and Cubs have marked Founder's Day (22 February) with a mud slide in 2006 and 2007.



Debutantes 1977



Kaiwaka Guides and Scouts marching in centennial parade 1959

April 2018

Sports

Sun	Mon	Tues	Wed	Thu	Fri	Sat
1 Daylight Saving Ends Easter Sunday	2 Easter Monday	3	4	5	6	7
8	9	10	11	12	13 End Term One	14
15	16	17	18	19	20	21
22	23	24	25 ANZAC Day	26	27	28
29	30 Term Two Begins					

- First athletics were recorded in the 1890s.
- Tennis was first played on grass courts behind the current Cheese shop. In 1913 courts were built close to the present courts. After WWII new courts were built at McClean Park (now the rest area next to the motel). In 1975, following floods, new courts were built on the current site. Kaiwaka Tennis Club celebrated 75th Birthday December 1987.
- Rugby was also played at McClean Park; the players washed in the Kaiwaka River. In April 1960 - the Kaiwaka, Mangawhai and Oneroa rugby football clubs combined to

- become the Eastern United Rugby Football Club. In March 1995 Otamatea Rugby named their senior teams the HAWKS.
- The Kaiwaka Domain Board, on the current Kaiwaka Sports Assn site, was formed in the early 1920s. The opening of the Kaiwaka Domain and Sports Grounds was on 12 March 1960 with a Gala Day and the crowning of the carnival queen. In April 1961 flood lights were installed in Kaiwaka Domain - first rugby match under lights.
- First Kaipara Hunt meeting 9 June 1979.
- The majority of the fundraising for

- the 1981 pavilion was through security and 24 hour catering at three Sweetwaters' Festivals.
- The 1990 opening of the saw beginning of Kaiwaka fitness and badminton.
- Otamatea Gymnastics started 2004 in the Kaiwaka Gym.
- Pt. Curtis Cruising Club celebrated 50 years in 2007.



Rugby Football at McClean Park c.1950



Guy Haughton & Precious McKenzie, Gym opening 1990



Tennis at the old Domain Pavilion 1975



Hakaru Pony club began in 1974 with children on farm horses.



Hockey 1990



Athletics 1982



The Kaiwaka Sports Association today

May 2018

Community Services

Sun	Mon	Tues	Wed	Thu	Fri	Sat
		1	2	3	4	5
6	7	8	9	10	11	12
13	14	15	16	17	18	19
20	21	22	23	24	25	26
27	28	29	30	31		



Kaiwaka Fire Brigade in action, southern end of Kaiwaka town, 2006



- Kaiwaka Firebrigade formed 1963. Their new Station opened in November 1966.
- Kaiwaka St.John's formed September 1977, initially meeting in the Archie Bull Hall. The new station opened 30 November 1991.
- Discussions for the Kaiwaka Water Supply began in the early 1960s - piping began in 1975 under a local scheme.
- Kaiwaka Lions Club formed in 1978.
- 27 April 1993 - Kate's Place

formal opening

- 1897 the Curtis/McClean boarding house was moved from Pt. Curtis to Kaiwaka - included the first post office.
- 1914 saw the opening of Kaiwaka's first telephone exchange.
- The first public telephone was installed outside the exchange in 1964.
- The automatic telephone exchange opened 28 September 1984.

- Opening day for the Kaiwaka post office and telephone exchange was 16 April 1936, and the regular rural delivery began.
- The post office closed in February 1988, and the postal agency opened.
- The local RSA clubrooms were built in 1951.
- The *Kaiwaka Bugle* - first issue produced by Mary and Bob Corker some time before April 1978.



Kaiwaka St. John members took commission of their first ambulance 1 November 1990.

June 2018

Matariki & Marae

Sun	Mon	Tues	Wed	Thu	Fri	Sat
					1	2
3	4 Queen's Birthday	5	6	7	8	9
10	11	12	13	14	15 Matariki	16
17	18	19	20	21	22	23
24	25	26	27	28	29	30



Governor General Sir Paul Reeves is rowed by a crew of 150 on the waka Mahuhu ki te Rangi. He crossed from the former Rangiora Mission House to the Otamatea Marae, for the opening of the marae on 3 November 1990.



Leading the Centennial Parade
3 April 1959

● Matariki (Pleiades) marks the start of the Maori New Year.

● Paraire Karaka Paikea, 1894 - 1943, Te Uri-o-Hau and Ngati Whatua; Methodist minister, Ratana leader, M.P. 1938-1943.

● Tapihana Paraire (Dobson) Paikea (pictured right), a great-great-grandson of the paramount Te Uri-o-Hau chief Paikea Te Hekeua (Te Uri-o-Hau and Ngati Whatua leader) and son of Paraire, was M.P. for Northern Maori from 1943 till he died at Oneriri, Kaiwaka, on 7 January 1963.

● Sir Graham Latimer was the stationmaster at the Kaiwaka railway station from 1956.



Sir Howard Morrison's National Ride For Life (for drugs education) came through Kaiwaka on 2 November 1990. He rode with the local horse people, and was presented with a large cheque at the Kaiwaka sports grounds.

July 2018

Education

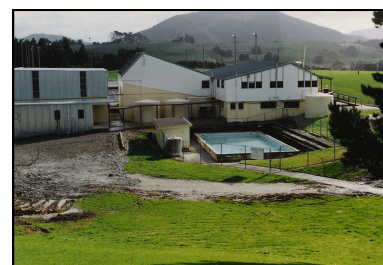
Sun	Mon	Tue	Wed	Thu	Fri	Sat
1	2	3	4	5	6 Term Two ends	7
8	9	10	11	12	13	14
15	16	17	18	19	20	21
22	23 Term Three Begins	24	25	26	27	28
29	30	31				



Lucy Gilligan 2008



Old Kaiwaka School 1925



Kaiwaka School swimming pool 1990



Kaiwaka School Std 4 New Image rugby team c.1986



Santa comes to Playcentre 2006



Val Tantrum at the Kaiwaka School Calf Club 1950

- The first Kaiwaka School committee meeting was held 2 May 1870, and the school was duly built - the site is where Windmill Lane is today.
- Kaiwaka School moved to the current site in 1880. The first of the modern buildings were erected in 1941-42.
- Horse paddock - in 1924 a portion of the disused road was fenced off to use for the children's horses.
- The first school bus service was McIntosh's in 1950.
- The Dental Clinic was built in 1952.
- The Parekura Maori School, built 1951 after the tragic loss of children crossing the harbour to Tanoa school, till 1965.
- There were earlier primary schools at Pukekaroro; Ranganui during the construction of the railway; Hakaru 1915-50; Oneriri 1947-54.
- The Kaiwaka School first swimming pool was built with voluntary labour in 1953.
- D. Mossman was chairman of the first Parent Teacher Association formed 29 October 1958.
- Mr Prouting, Kaiwaka principal 1936-64, began the first Calf Club.
- Kaiwaka Playcentre's first session was on 7 February 1967 in the Domain Pavilion. The Vallana Knitwear factory opened in Hastie Lane July 1961 - Playcentre purchased the building in 1967.
- First Playcentre-Plunket Ball 30 June 1967.
- Te Puawaitango O Nga Kakano Kaiwaka (kohanga reo) opened 1990 in Nathan Road.

August 2018 Halls & Entertainment

Sun	Mon	Tue	Wed	Thu	Fri	Sat
			1	2	3	4
5	6	7	8	9	10	11
12	13	14	15	16	17	18
19	20	21	22	23	24	25
26	27	28	29	30	31	



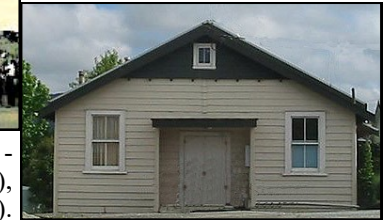
War memorial plaques in the Kaiwaka War Memorial Hall



Centennial parade outside the new hall 1959



The former public and gospel hall - with the Home Guard in 1943 (above), and the front today (right).



● In 1897 the first public hall was dragged on logs by bullock team from near the corner of Mountain Rd to the site of the Kaiwaka St. John's Station.

● Second public Hall, built near the primary school in 1932. After 1952 this became the Gospel Hall.

● The current Kaiwaka War Memorial Hall, built for £12,000, opened in 1952 as the Kaiwaka Community Centre War Memorial Hall.

● The Medical Centre was added to the hall in 1986.

● The first Kaiwaka Public Library began in 1886, housed in a school cupboard.

● The Library came under the Kaiwaka Hall umbrella in July 1978, initially in cupboards and then in its own small room by the hall entrance. In 2001 the library moved to the old Post Office in 2001.

● Movies were first shown in the second public hall. The Gaumont Kalee 35mm projector machine installed the third public hall in 1952 is still in use.

● Jaques Band - Bill and Brian Jaques first played in 1948. Reg joined them in 1950. These brilliant brothers are still playing for socials, dances and balls.



Kaiwaka Garden Club



Reg, Brian and Bill Jaques

September 2018

Enterprise

Sun	Mon	Tue	Wed	Thu	Fri	Sat
						1
2	3	4	5	6	7	8
9	10	11	12	13	14	15
16	17	18	19	20	21	22
23	24	25	26	27	28	29
Daylight Saving Starts 30					Term Three Ends	

- First store - Hull's at Fairburn, followed by Kaiwaka store owned by Shepherd, Randalls, then Jaques in 1924. A second store, now Kate's Place, opened in the 1948.
- During the Depression Ivan Coates started a tent garage where the Fire Station stands today.
- The Kaiwaka Lime Company on Gibbons Rd was formed in 1950, directors were local farmers. Now Parker Transport and Lime.
- A butchery opened in 1954; the Kaiwaka Cheese Shop occupies

that building today.

- In the 1950s Kaiwaka Motors (Judd's) opened its doors where the Apple Basket is now; they sold vehicles and fuel, and ran a workshop. Hilltop (Shamrock) service station also opened around that time.
- Three Furlongs hotel opened 18 June 1965. Before then the nearest hotel had been 'Cornish Arms' (1870 - 1900) in Hakaru.
- 1957 an electrical/drapery shop opened, Gateway Takeaways opened in that shop in 1966.
- Ottaway Bakery opened in 1967

- Kaiwaka Development Ltd formed 1970 to build shops - Yamaha Centre, hairdresser, etc, and opened 7 August 1978.
- Motel Emmanuel (Gateway North) opened February 1986.
- Café Eutopia began to take shape in 1999.
- In 1999 Bob Clyde began developing the Intrac site with his Pot Shed, Kaipara District Council Service and Information Centre (2000), later the café and two new buildings.



The first store on the corner of Kaiwaka Mangawhai Rd. (c.1920)



Around town
2008

October 2018 Cokies & Blockies

Sun	Mon	Tue	Wed	Thu	Fri	Sat
	1	2	3	4	5	6
7	8	9	10	11	12	13
14	15 Term Four Begins	16	17	18	19	20
21	22 Labour Day	23	24	25	26	27
28	29	30	31			

● Ostriches first farmed at Rangiora for a short time in the late 1880s, and then again on Baldrock Rd in the late 1990s.

● Kangaroo farming were trialled on Hargreaves' Run in the 1870s, hence Kangaroo Point.

● After the 1913 rail opening Kaiwaka farmers sent cream to Helensville rather than using the muddy road to Hakaru. Cream from Oneriri farms also went by launch to Maungaturoto.

● Aerial topdressing of the land commenced in 1932.

● 1950s the Lands and Surveys Department began land settlement for ex-servicemen.

● Traditional farming continues but with fewer producers – on the Oneriri in the 1950s there 19 dairy milking sheds now there is only one.

● First helicopter landed in Kaiwaka 5 December 1960.

● 1970 there were 6 oyster farms (leases) around the Oneriri Peninsula.

● Rainfall - in the last 30 years of records 2000 was the driest and 1989 was the wettest.

● Kaiwaka's most memorable hail storm 26 November 2005.

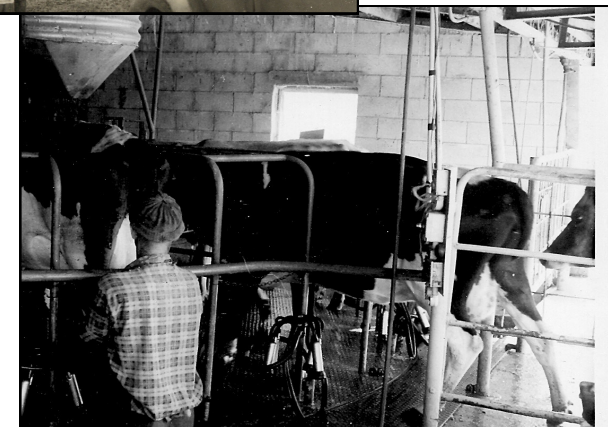
● The last 20 years has seen a move toward smaller farms/lifestyle blocks, with alternative farming methods and produce being introduced such as organics, heritage plants, flowers, and sustainable living methods.



Building a haystack 1920s



Topdressing on Oneriri Peninsular 1950



First rotary milking shed in Northland - B.Hyndman 1970



Yoshi's experimental building in Kaiwaka.



Koanga Gardens

November 2018 Crossroads of Kaipara

Sun	Mon	Tue	Wed	Thu	Fri	Sat
				1	2	3
4	5	6	7	8	9	10
11	12	13	14	15	16	17
18	19	20	21	22	23	24
25	26	27	28	29	30	

● The Totara Downs homestead (Clayton/Clarke/Mills), built in 1871, was the home written about in Jane Mander's novel *The story of a New Zealand river*. This house was shifted in 1981 and is now the Riverhead Guest House in Horeke.



● The Topuni pine forest was first planted 1927 (7000 acres). The first sawmill was built in 1950.

● Until 1937 the Main Road North went along Gibbons Road for 500m then turned left over a narrow wooden bridge.

● Kaiwaka Saleyards - sales ceased during the depression in the 1930s.

● 1975 Kaiwaka Water Supply piping began.

● 1980 Kaiwaka's town sewage plant installed.

● NZ Refinery Company's oil pipelines were laid east of Kaiwaka in 1982.

● 1884 Pukekaroro Roads Board

merged with Hobson County.

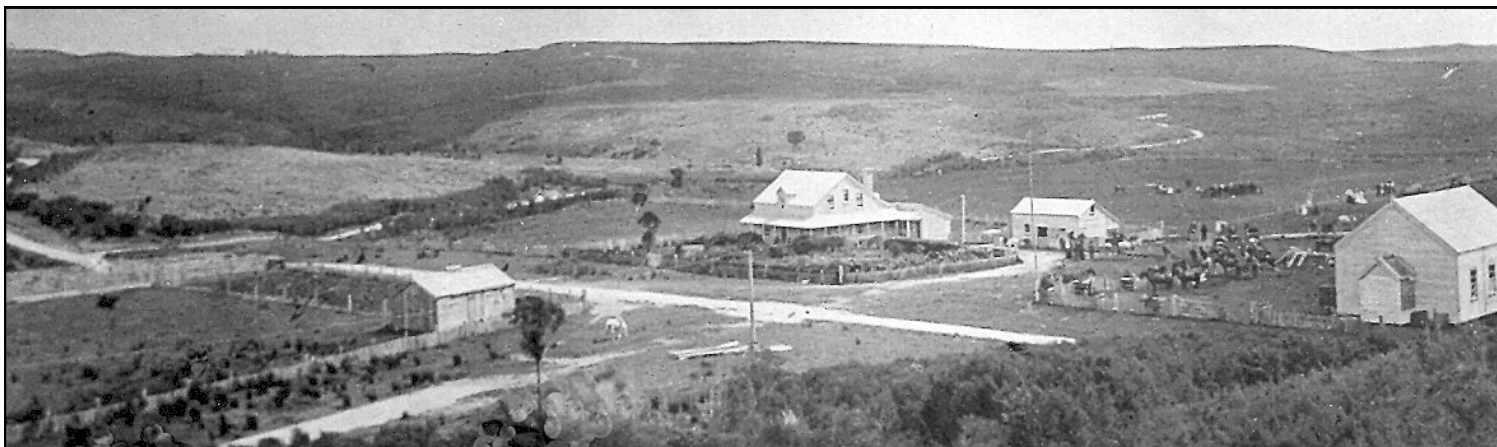
● 1887 Otamatea County Council was formed, with a Kaiwaka Riding.

● April 1956 Kaiwaka became a County Town.

● 1959 Kaiwaka Businessman's Association was formed.

● Otamatea County Council ceased to exist on 30 October 1989 and became part of the Kaipara District Council.

● 4 January 2000 Kaipara District Council opened a Service Centre in Kaiwaka.



1900 Kaiwaka, looking s-w, sports day saleyards, storage shed, Curtis/McClearn home, hall

Rural Estate signs at the corner of Oneriri Rd and SH 1



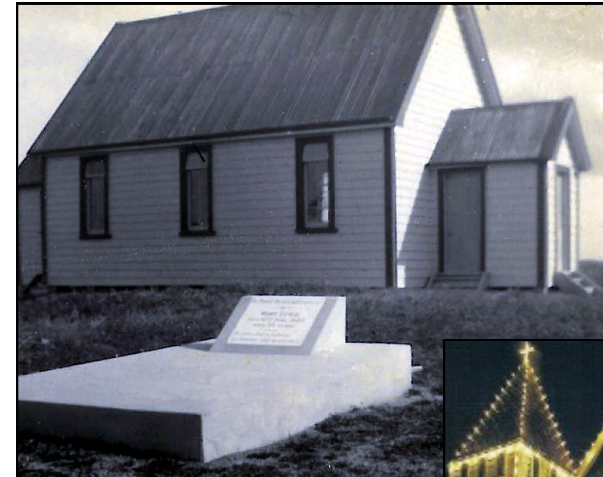
December 2018 'Seeing the Light'

Sun	Mon	Tue	Wed	Thu	Fri	Sat
						1
2	3	4	5	6	7	8
9	10	11	12	13	14	15
16	17	18	19	20	21	22
23	24	25 Christmas Day	26 Boxing Day	27	28	29
30	31					

- Electricity - Kaiwaka township 'switch on' 18 August 1939, but not until 1953 in the rural areas.
- Mark Ottaway's vision for the 'Little Town of Lights' began with St.Pauls church in 1997.
- St.Pauls opened 29 March 1935 on land given by Frank Jaques.
- The Anglican Ladies Guild formed October 1953.
- Archie Bull Hall built in 1967.
- The rock retaining wall and foot-path by St.Paul's Church built in 1983.

- Kaiwaka Interdominational Settler's Church, in cemetery grounds, first service 25 December 1878. The first burial in the Kaiwaka Cemetery was 1915. Brick shelter dedicated 2 April 1959.
- St.Michaels, Hakaru, opened Christmas Day 1861.
- The Nuhaka, Oruawharo, church was built at in 1888.
- Wm Leslie Presbyterian Church consecrated 21 April 1939 on land given by Mrs McClean - used until Co-operating Parish and Anglican services began 27 March 1977.

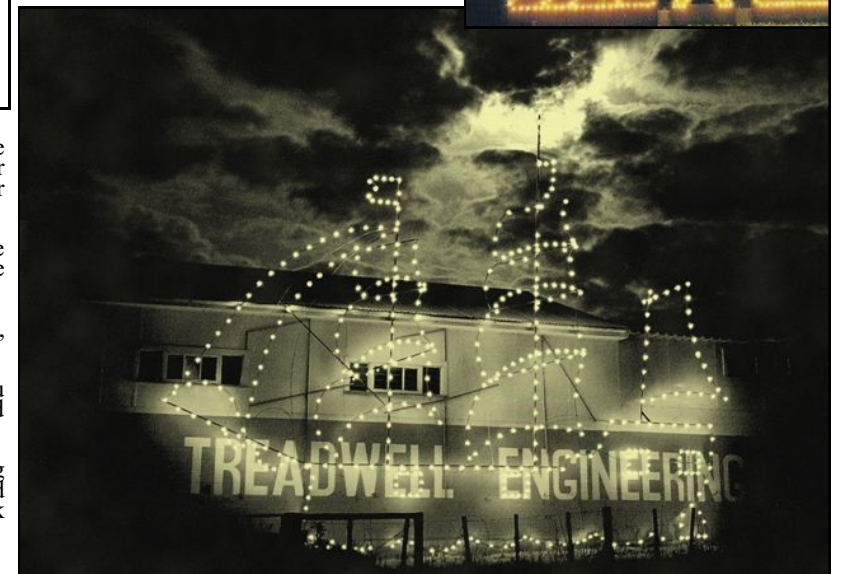
- Regular Brethren services were held in first public hall, after M.Stewart purchased it for their meetings in the 1930s.
- In 1959 the Brethren replaced the old hall with a brick meeting house (now St.John's Station).
- St.Mary's Church, Nathan Rd, opened on 21 December 1958.
- "Praise Be" was filmed at Ngamotu (end of Oneriri Rd) and was screened on TV One in March 1996.
- Kaiwaka Family Church building was moved from Whangarei and attached to the former National Bank in March 1998.



Settler's Church



St.Paul's Church





KAIWAKA Bugle

Celebrating



The Sesquicentennial logo (left) shows the Maori rock carving found on Baldrock, unique to Kaiwaka. The picture appears on the back cover of '1859 - 1959 Centennial of Kaiwaka'. The carving is now covered by a landslip. The stars represent the lights of 'The Little Town of lights'.

PHOTOGRAPHS:

Front Cover - *T. Moyle*
January - Spec, *J.Coufreur*; cat, *W.Howard*; barking dog, *L.Hargreaves*; penning sheep, *C.Ross*; 4 dogs, *K.Boyd*.
February - Pukekaroro, *D.Stewart*; Baldrock *R.Hastie*.
March - fishing, scouts, *L.Hargreaves*.
April - Gym opening, hockey, athletics, *J.Reynolds*; pony club, *C.Bygrave*.
May - Fire Brigade, *J.Bowmar*; Bugle, *C.Gilligan*, *W.Howard*, *L.Hargreaves*; St.John's, *J.Reynolds*.
June - Reeves, Morrison, *J.Reynolds*.
July - lamb, *H.Gilligan*; pool, Playcentre, rugby, *J. Reynolds*.
August - plaques, *J.Reynolds*; hall front, library, *W.Howard*; band, *B.Jaques*.
September - shops, *I.Stewart*, *W.Howard*.
October - topdressing, *R.Hargreaves*; shearing, *L.Hargreaves*; dairy shed, *B.Hyndman*.
November - real estate signs, *I.Stewart*, house, *D.Mills*.
December - St Pauls, *J.Stone*, Northern Advocate; ship, *K.Arn*; KFC, *W.Howard*.
Other photos unknown.

REFERENCES / FURTHER READING:

Centennial of Kaiwaka 1859-1959, Kaiwaka Centennial Association, 1959
Kaiwaka: A photographic history, L.J. Hargreaves et al, 1990, ISBN 0-473-01086-0
Tall spars, steamers & gum, Wayne Ryburn, Kaipara Publications 1999, ISBN 0-473-06176-7
Skye to Timber Mountain, Desmond Stewart, 2004, ISBN 0-476-00661-9
Hill of the sea bird, A.P. Watson, ISBN 0-908817-03-7
Kaiwaka's 50 years of change 1959-2009 (working title), R.Smith, to be published in 2009

This Kaiwaka 2018 Calendar has been compiled from information made available to the Kaiwaka Historical Society and The Bugle Team.
Thank you to everyone who contributed to our project.